

CP 60 Vordachsystem/ CP 60 Canopy

110

CP 80 Vordachsystem/ CP 80 Canopy

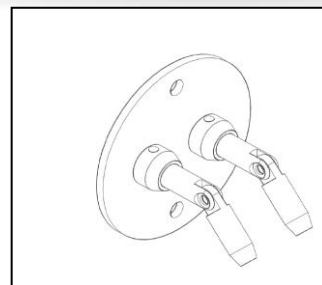
113



6

# VORDÄCHER CANOPYS

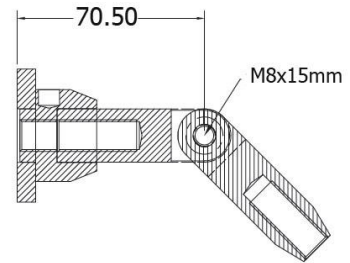
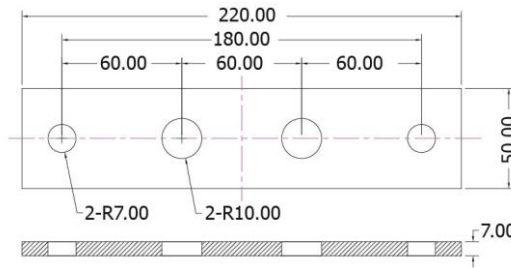
steelbase





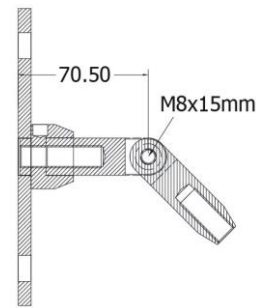
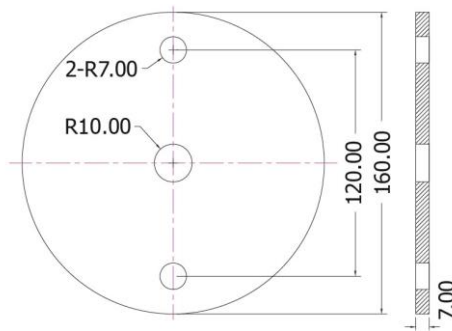
## CP 60-H

V2A



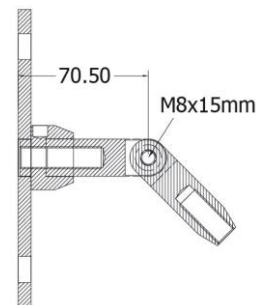
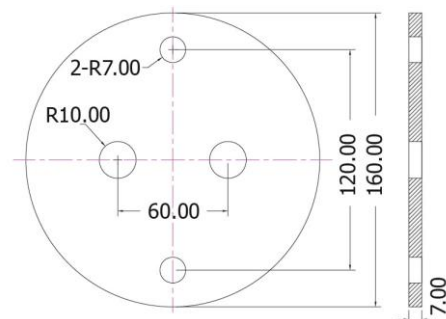
## CP 60-I

V2A V4A



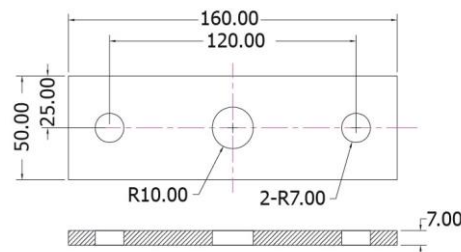
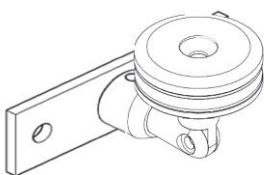
## CP 60-J

V2A V4A

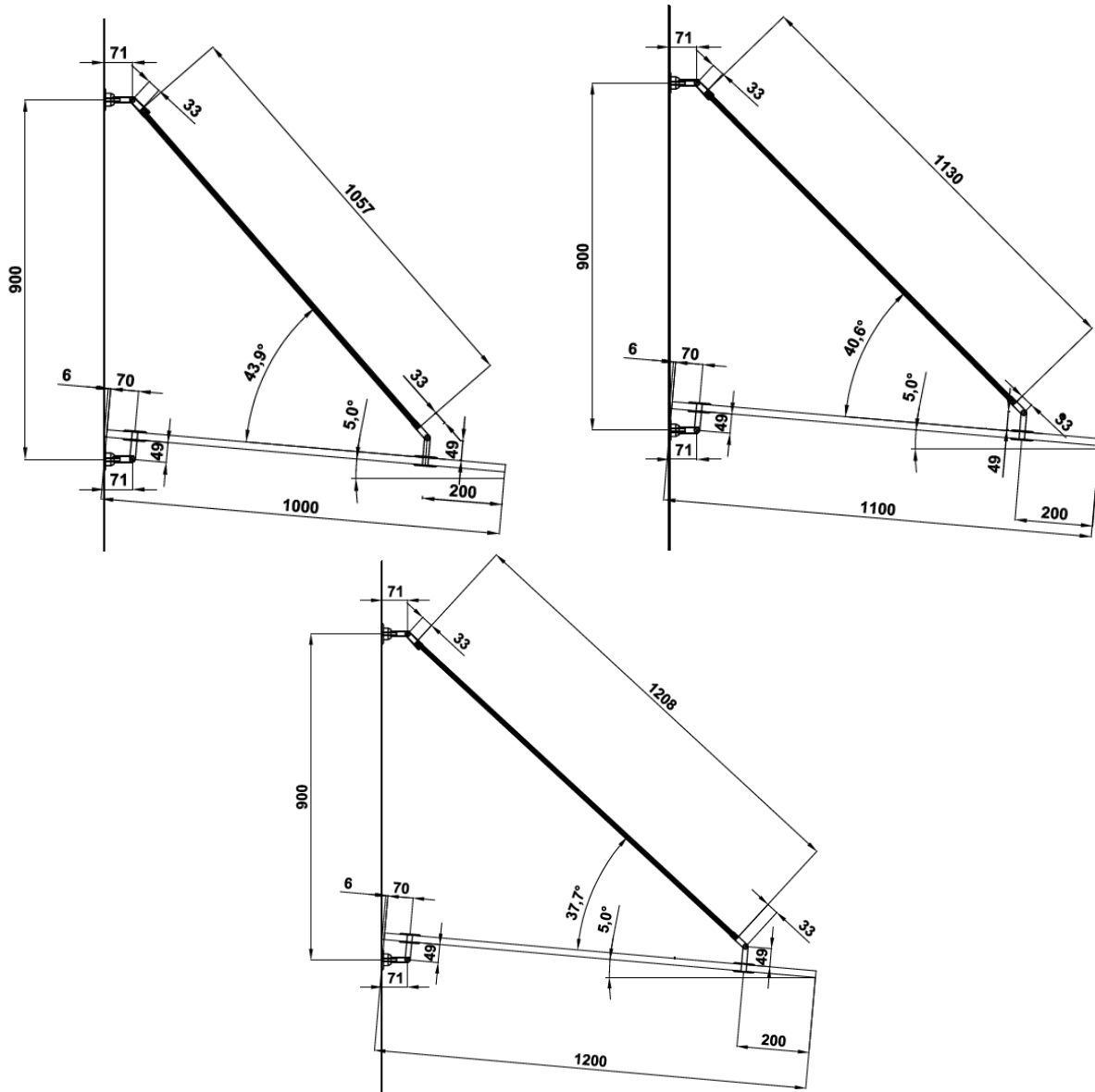


## CP 60-L

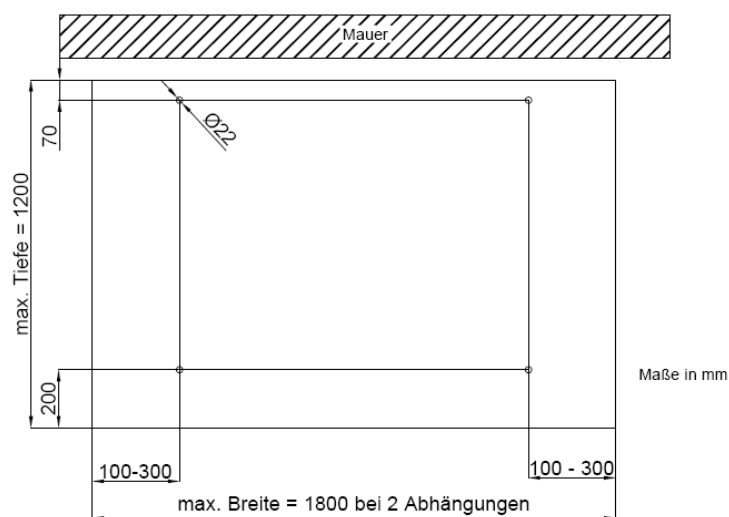
V2A V4A



## Schematische Ansicht/ Schematic View



## Glass Cut Out



## CP 80 Vordachsystem/ CP 80 Canopy

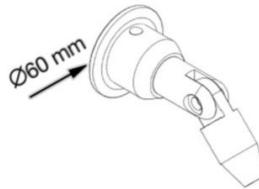
### CP 80-A

V2A V4A



### CP 80-B

V2A V4A

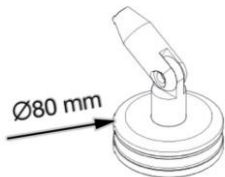


Statik vorhanden



### CP 80-C

V2A V4A



### CP 60/80-D

V2A V4A

M12 Gewinde/  
M12 thread



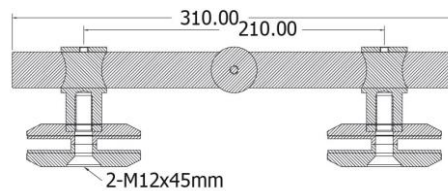
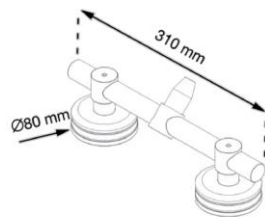
Folgende Längen erhältlich/  
Following length available:

L = 1208 mm      L = 1442 mm  
L = 1130 mm      L = 1362 mm  
L = 1057 mm      L = 1285 mm

L = 900 mm (nur in V2A erhältlich)

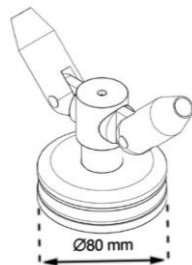
### CP 80-E

V2A V4A



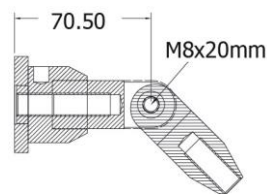
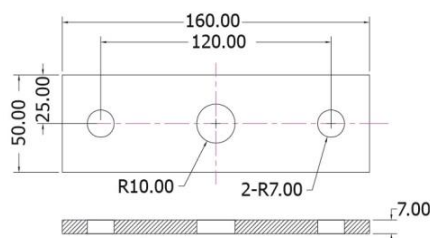
### CP 80-F

V2A V4A



### CP 80-G

V2A V4A

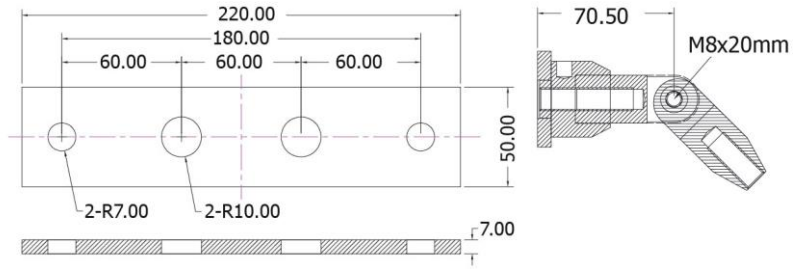


# steelbase

glass & fittings

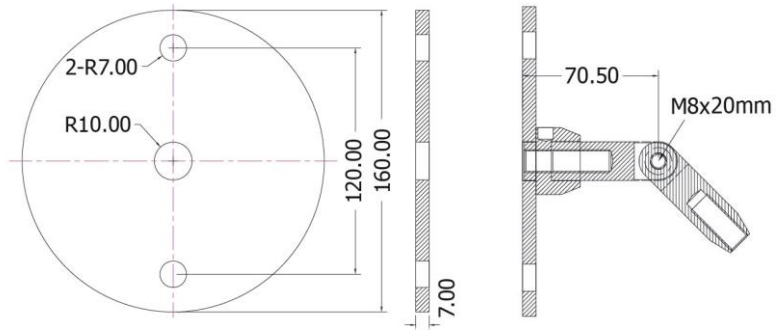
## CP 80-H

V2A



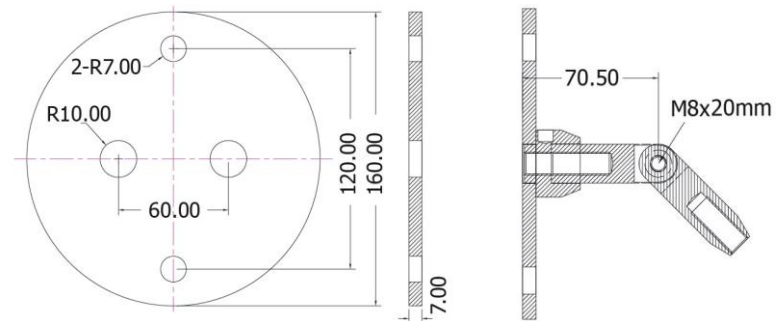
## CP 80-I

V2A V4A



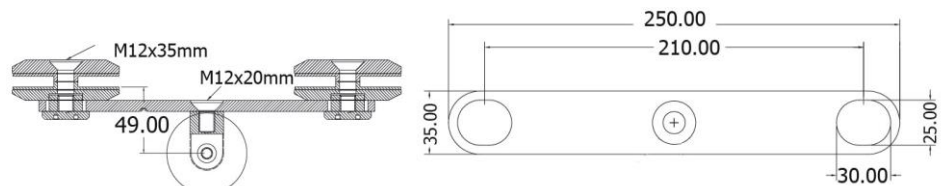
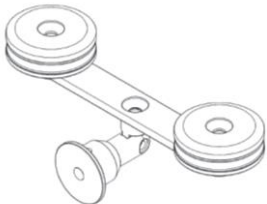
## CP 80-J

V2A



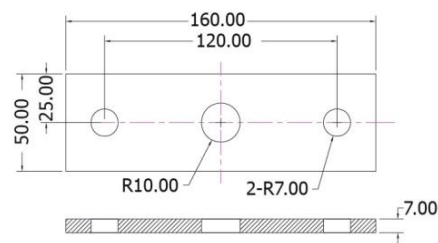
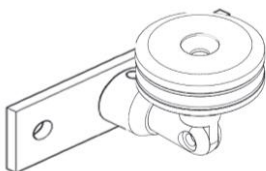
## CP 80-K

V2A

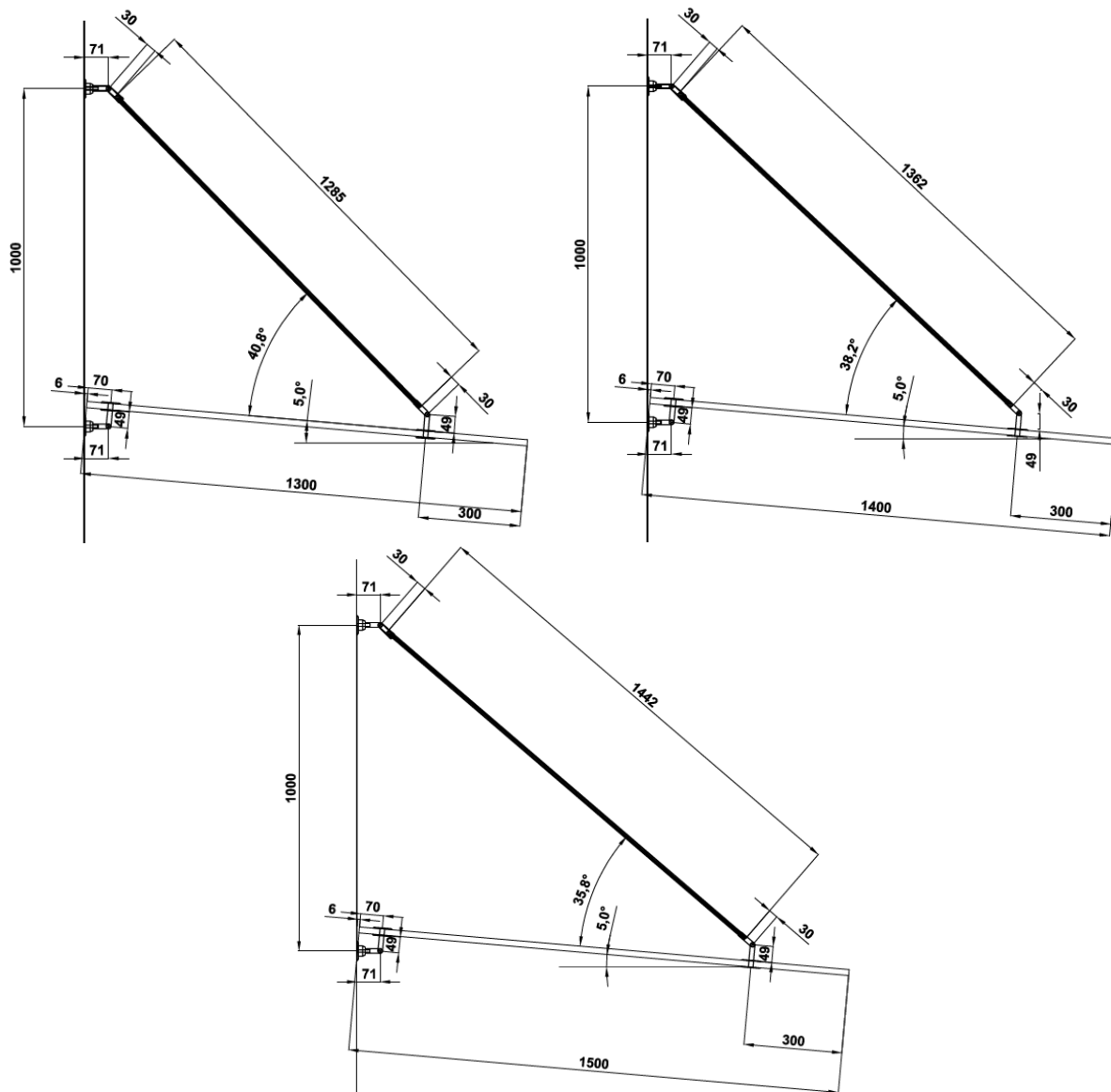


## CP 80-L

V2A V4A



## Schematische Ansicht/ Schematic View



6

## Glass Cut Out

